

How to choose the snacks extruder machine?

The snacks food is more and more popular in market all over the world. Many factories want to start the [snacks food machines](#). But how to choose the good extruder machine for puff snacks?

1. The extruder machine materials. Food machines should be stainless steel materials food grade. Stainless steel palte is 1.5-3mm. Frame could be carbon steel.



2. The Screw. The screw material is 38CrMoAl, nitriding treatment.



3. The double screw extruder machine needs to control the feed capacity to control the snacks quality.

The inverter is needed to control motor speed.



4. Heat system, and water cooling system.

Temperature is a variable for puff snacks producing. So there are two systems on temperature controlling.



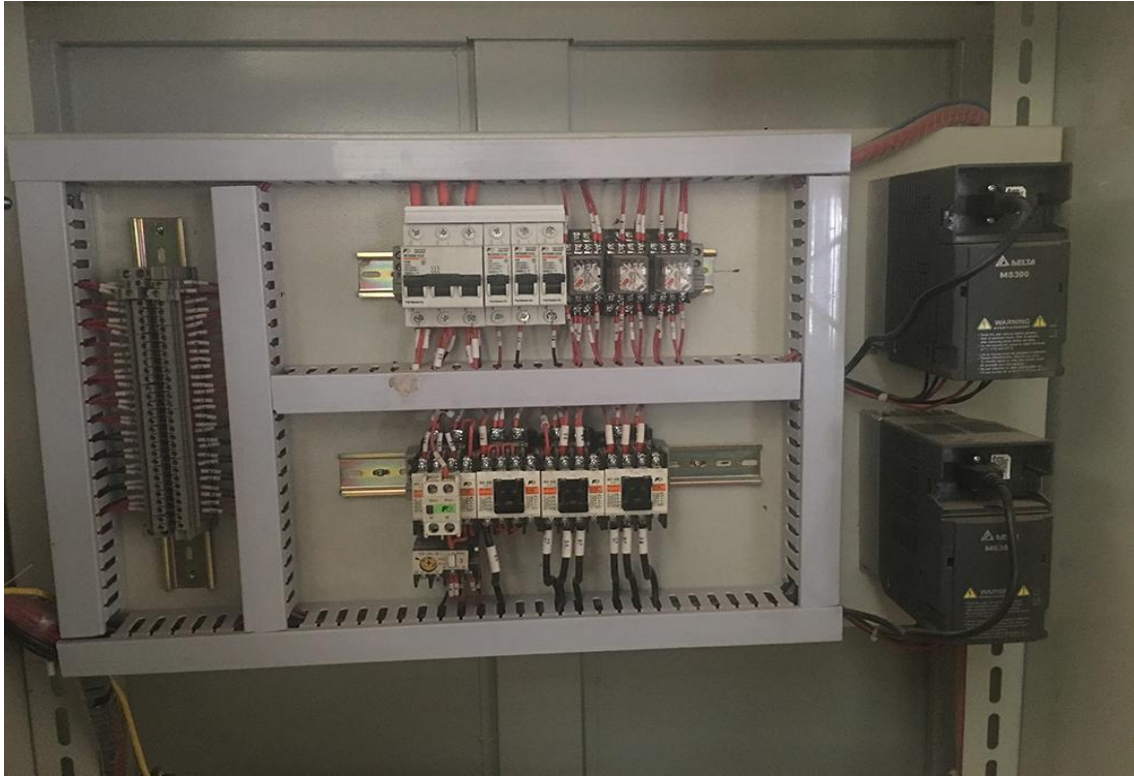


5. Control pannel.

The feeder system. water cooling system, oil cooling machine, cutter system.
Screw speed.

The pannel could control all systems and screw speed.





[Welcome inquiry us on double screw extruder machine.](#)